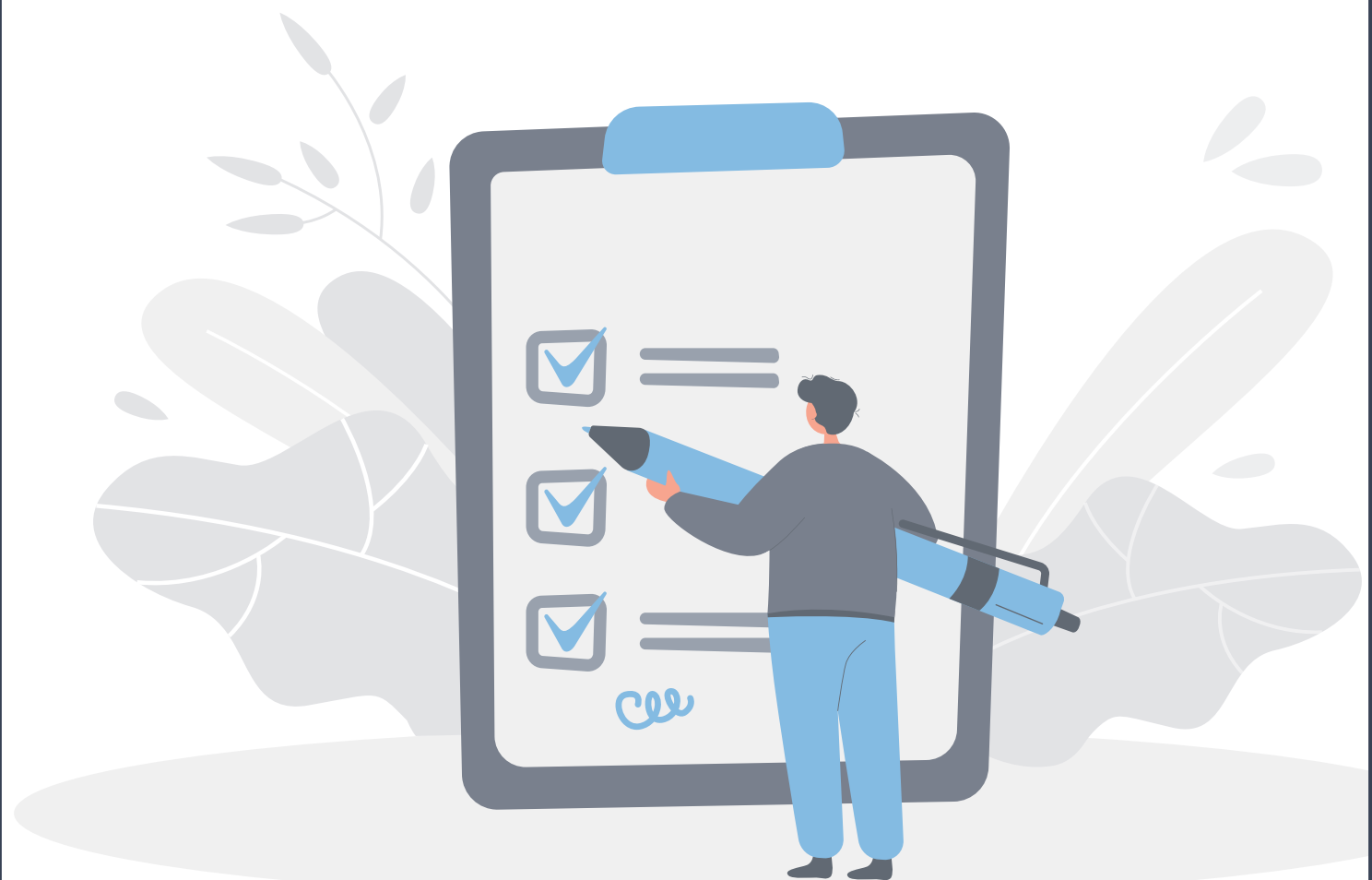




# MAJLISARTS AND SCIENCE COLLEGE

## EVALUATION POLICY



(Post Graduate College Affiliated to the University of Calicut, Approved by the Govt. of Kerala & Recognized under section 2 (f) of the UGC Act 1956)  
P.O. Puramannur, Via- Valanchery- 676552, Malappuram Dt., Kerala.

[www.masc.edu.in](http://www.masc.edu.in)

# Evaluation Policy

- Transparent and Robust
- Grievance Redressal Mechanism
- Faculty Development Programs and Workshops

The formative evaluation in the institution is done as per the university rules. A two tier system of evaluation is followed namely, the internal assessment and the external university examinations.

## 1. Internal assessment

The internal examination cell monitors the conduct of the internal examinations, evaluation and publication of results. Two centralized internal examinations are conducted every year for all the programs.

Coordinator : Mr. Thakiyudheen (Asst. Professor post graduate Dept. of Mathematics)

## 2. External Examinations

The external examination is conducted at the end of each semester by the university. The examinations are conducted in CCTV installed halls. The external examination cell monitors the conduct of university examinations.

Chief Supdt. : Dr. P Muhammedali (Principal)

Additional Chief Supdt. : Prof. Soopy (Vice Principal)

## 3. Grievance Redressal mechanism

A three tier Grievance Redressal mechanism is followed in the institution. Every department has Grievance Redressal cell for internal examinations. Institutional Grievance Redressal cell address the grievances which are not solved in the concerned department. In case the grievances are still not solved, the matter will be forwarded to the University Grievance cell.

## 4. Training and workshop

Teaching Learning center of the institute organizes workshops and training in question paper designing and outcome based education.